



lightforce®

# DEEP TISSUE LASER THERAPY™

TREAT WITH CONFIDENCE



# LIGHTFORCE® DEEP TISSUE LASER THERAPY™

## TREAT WITH CONFIDENCE

LightForce® Therapy Lasers are known around the world for innovative technology and evidence-based treatment solutions. With thousands of customers across the globe, Chattanooga® estimates over 1 million+ treatments are performed using LightForce® Therapy Lasers per month. LightForce® Therapy Lasers are unique among laser devices in having a singular focus in rehabilitation and pain management.

LightForce® Therapy Lasers are manufactured in the United States and are rigorously tested for safety and consistency.

Over 250 professional and college sports teams trust LightForce® Therapy Lasers for their athletes. LightForce® lasers can be seen on the sidelines of the EFL Championship, Premier League, Olympics, NFL, NBA, MLB, NHL, MLS, PGA Tour, Cirque Du Soleil, UFC, and the X Games.

With over 7,000 articles published on Low Level Laser Therapy, photobiomodulation is well established in the scientific community for efficacy in treating musculoskeletal pain and increasing local blood circulation.

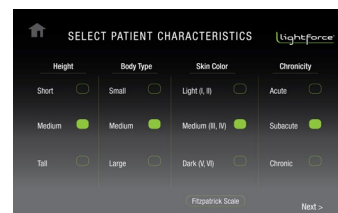








# KEY FEATURES



## INFLUENCE® TECHNOLOGY

Influence® Technology takes into account the patient's unique absorption characteristics and specific clinical condition to help provide the most effective treatment. Patient specifications such as condition, body type, and skin type are taken into account. The in-depth protocol settings provide recommended parameters on treatment heads and power levels to aid in clinician confidence and reduced learning time.

## EMPOWER IQ™ DELIVERY SYSTEM

### Models: 40W XLi, 25W XPi

The LightForce® Empower IQ™ Delivery System is changing the game in laser therapy emission. Designed to be user friendly and responsive, Empower IQ™ is the new generation of delivery technology.

### Fiber

Ultra-premium workmanship and next level durability. Extra-long for user convenience.



### Quick Disconnect Heads

Quick release and change-out treatment heads for better ease of use and versatile delivery options. The smart system senses appropriate applicators, treatment heads, associated power, and treatment hand speed.



### Smart Handpiece

Built-in dosing feedback technology with embedded finger switch and indicator lights. In order to achieve effective treatments and improve dosing accuracy, the Smart Handpiece assesses the operator's speed and gives real-time visual and sensory feedback. The Smart Handpiece is ergonomically styled for operator comfort.



Recommended Speed



Speed too fast



Speed too slow

## EXCLUSIVE MASSAGE BALL TECHNOLOGY

The exclusive LightForce® patented massage ball allows the clinician to treat patients on-contact.

### Compression

The on-contact massage ball compresses superficial tissues, displacing excess fluid and helping to enhance laser penetration to deep structures. This compression reduces the impact of superficial absorbers.

### Collimation

The massage ball acts to collimate the light beam, helping to reduce energy loss.

### Refractive Index

The fused silica composition of the massage ball helps minimize light loss as it passes from the massage ball into the skin.

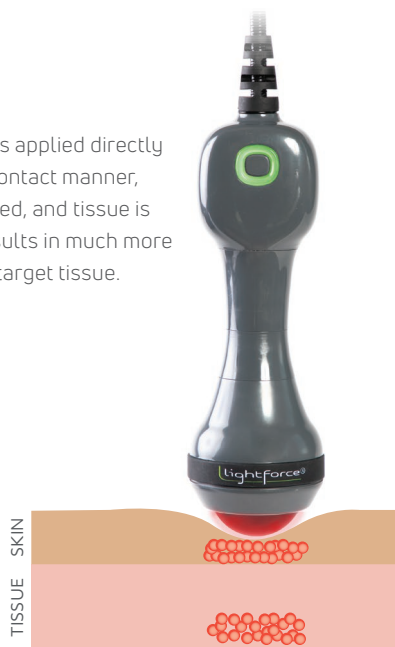
### Reflection

On-contact application of delivery to tissue minimizes energy loss due to reflection.

### Soft Tissue Work

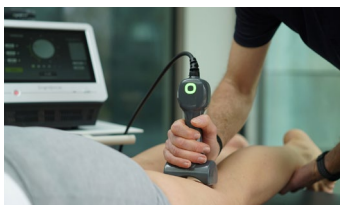
The massage ball allows the clinician to do manual soft tissue work with the applicator while delivering energy.

When laser therapy is applied directly to the skin in an on-contact manner, less energy is reflected, and tissue is compressed. This results in much more energy reaching the target tissue.



## POWER

Ranging from 15 all the way to 40 watts of power, LightForce® Therapy Lasers provide the power needed to reach deep tissues. The increased power directly impacts the time needed to apply a therapeutic dose of light energy, allowing clinicians to decrease the time required to treat effectively. The higher power equips clinicians to treat deeper and faster while covering more tissue area in less time.



## TIME WITH PATIENTS

With an average treatment time of 4-7 minutes, clinicians can use laser therapy as part of an overall plan of care and maximize the time available to treat.

## EXCLUSIVE LIGHTFORCE® TREATMENT HEADS



### Small Cone

Systems: 25W XPi, 15W FXi  
When treating very narrow or precise areas, the Small Cone is ideal due to its smaller spot size.



### Small Massage Ball

Systems: 40W XLi, 25W XPi, 15W FXi  
Designed to be used with low to moderate power, the Small Massage Ball is ideal for treating trigger points, around the face, or the digits of the feet and hands.



### Flat Window

Systems: 40W XLi, 25W XPi, 15W FXi  
The Flat Window is great for treating superficial tissues with small to moderate surface areas, especially in the presence of bony prominences.



### Large Massage Ball

Systems: 40W XLi, 25W XPi, 15W FXi  
The most commonly used on-contact head, the Massage Ball reduces light scatter on the surface while allowing physical compression of tissue. Paired with higher power settings, it is the ideal tool to address problems in the back, hips, and larger muscle groups.



### Large Cone

Systems: 40W XLi, 25W XPi, 15W FXi  
The Large Cone is designed for off-contact treatments that require higher power settings and is ideal for treating larger areas or when deeper tissues need to be addressed. The Large Cone is not recommended for treatment around the face or over smaller areas due to its larger spot size.



### XL Cone

System: 40W XLi  
Coupled with the patented Smart Handpiece, the XL Cone has the unique ability to keep high power treatment comfortable for most patients. With a spot size that is twice the size of our Large Cone, it allows clinicians to safely treat large areas and deeper conditions at over 25 Watts of power.



### Rolling Pin

System: 40W XLi  
LightForce created the Rolling Pin to allow large areas to be treated with the 40W XLi with a one of a kind, on-contact head that makes treatments simple to administer.



# MUSCLE & JOINT PAIN RELIEF

## INDICATIONS

Deep Tissue Laser Therapy™ is used to treat painful muscles and joints associated with acute and chronic soft tissue injuries. It is also indicated for helping relieve pain and stiffness associated with osteoarthritis via its ability to increase localized blood flow. These factors make therapeutic laser a sensible modality choice for post-activity recovery.

## CLINICALLY STUDIED TO HELP IN THE TREATMENT OF:

Neck Pain <sup>(1)</sup>

Low Back Pain <sup>(2,3)</sup>

Sciatica <sup>(4,5)</sup>

TMJ <sup>(6,7)</sup>

Elbow and Joint Pain <sup>(8)</sup>

Arthritis <sup>(9)</sup>





## Large Massage Ball

Systems: 40W XLi, 25W XPi, 15W FXi

### CLINICAL STUDIES

1. Chow RT, Johnson MI, Lopes-Martins RA, Bjordal JM. Efficacy of low-level laser therapy in the management of neck pain: a systematic review and meta-analysis of randomised placebo or active-treatment controlled trials. *Lancet*. 2009 Dec 5;374(9705):1897-908. doi: 10.1016/S0140-6736(09)61522-1. Epub 2009 Nov 13. Erratum in: *Lancet*. 2010 Mar 13;375(9718):894. PMID: 19913903.
2. Alayat MS, Atya AM, Ali MM, Shosha TM. Long-term effect of high-intensity laser therapy in the treatment of patients with chronic low back pain: a randomized blinded placebo-controlled trial. *Lasers Med Sci*. 2014 May;29(3):1065-73. doi: 10.1007/s10103-013-1472-5. Epub 2013 Nov 2.
3. Yousefi-Nooraie R, Schonstein E, Heidari K, Rashidian A, Pennick V, Akbari-Kamrani M, Irani S, Shakiba B, Mortaz Hejri SA, Mortaz Hejri SO, Jonaidi A. Low level laser therapy for nonspecific low-back pain. *Cochrane Database Syst Rev*. 2008 Apr 16;(2):CD005107. doi: 10.1002/14651858.CD005107.pub4. PMID: 18425909.
4. Holanda VM, Chavantes MC, Silva DF, de Holanda CV, de Oliveira JO Jr, Wu X, Anders JJ. Photobiomodulation of the dorsal root ganglion for the treatment of low back pain: A pilot study. *Lasers Surg Med*. 2016 Sep;48(7):653-9. doi: 10.1002/lsm.22522. Epub 2016 May 2. PMID: 27135465.
5. Jovicić M, Konstantinović L, Lazović M, Jovicić V. Clinical and functional evaluation of patients with acute low back pain and radiculopathy treated with different energy doses of low level laser therapy. *Vojnosanit Pregl*. 2012 Aug;69(8):656-62. PMID: 22924260.
6. Abbasgholizadeh ZS, Evren B, Ozkan Y. Evaluation of the efficacy of different treatment modalities for painful temporomandibular disorders. *Int J Oral Maxillofac Surg*. 2020 May;49(5):628-635. doi: 10.1016/j.ijom.2019.08.010. Epub 2019 Sep 21. PMID: 31547949.
7. Khairnar S, Bhate K, S N SK, Kshirsagar K, Jagtap B, Kakodkar P. Comparative evaluation of low-level laser therapy and ultrasound heat therapy in reducing temporomandibular joint disorder pain. *J Dent Anesth Pain Med*. 2019 Oct;19(5):289-294. doi: 10.17245/jdamp.2019.19.5.289. Epub 2019 Oct 30. PMID: 31723669; PMCID: PMC6834715.
8. Roberts DB, Kruse RJ, Stoll SF. The effectiveness of therapeutic class IV (10 W) laser treatment for epicondylitis. *Lasers Surg Med*. 2013 Jul;45(5):311-7. doi: 10.1002/lsm.22140. Epub 2013 Jun 3. PMID: 23733499.
9. Dima R, Tieppo Francio V, Towerly C, Davani S. Review of Literature on Low-level Laser Therapy Benefits for Nonpharmacological Pain Control in Chronic Pain and Osteoarthritis. *Altern Ther Health Med*. 2018 Sep;24(5):8-10. PMID: 28987080.

# FAMILY OF PRODUCTS



## XLi

**40W**

Treat larger, deeper areas and provide faster pain relief with real time dosing feedback. Chattanooga's most powerful laser, the 40W LightForce® XLi impacts deep tissue faster for pain relief in less time. The LightForce smart hand piece and onscreen recommendations increase dosing accuracy and help clinicians treat with confidence."

**Laser Type:** Class IV, Solid State  
**Laser Wavelength:** 980/810 nm  
**Laser Power:** 1W – 40W  
**Operating Modes:** CW or Pulsed  
**Aiming Beam:** 650 nm, < 4.5 mW  
**Dimensions:** 17" x 10.5" x 11" (43 cm x 28 cm x 26 cm)  
**Weight:** 19.6 lbs. (9 kg)  
**Warranty:** 24 months



## XPi

**25W**

Smarter than your average laser. The 25W LightForce® XPi gives real time visual and haptic feedback, allowing clinicians to provide consistent, accurate treatments. The XPi's built-in intelligence tells users which treatment heads are acceptable or not recommended for different power levels, which helps to provide for safer treatments and less guesswork from clinicians."

**Laser Type:** Class IV, Solid State  
**Laser Wavelength:** 980/810 nm  
**Laser Power:** 1W – 25W  
**Operating Modes:** CW or Pulsed  
**Aiming Beam:** 650 nm, < 4.5 mW  
**Dimensions:** 17" x 10.5" x 11" (43 cm x 28 cm x 26 cm)  
**Weight:** 19.6 lbs. (9 kg)  
**Warranty:** 24 months



## FXi

**15W**

Treat quickly and consistently on the go. The 15W LightForce® FXi is ideal for those practices or athletic training rooms needing to treat in multiple locations in or out of the office. Easily transportable with an integral battery, the lightweight FXi quickly impacts pain while weighing in at only 7 lbs."

**Laser Type:** Class IV, Solid State  
**Wavelengths:** 980/810 nm  
**Laser Power:** 0.5W – 15W  
**Operating Modes:** CW or Pulsed  
**Aiming Beam:** 650 nm, < 4.5 mW  
**Dimensions:** 15" x 11" x 8" (38 cm x 28 cm x 20 cm)  
**Weight:** 7 lbs (3.2 kg)  
**Warranty:** 24 months



A hand is holding a dark grey, handheld medical device. The device has a glowing green ring on its side. A black cable is attached to the top of the device. In the background, there is a piece of medical equipment with a screen and a red indicator light. The scene is set in a clinical or hospital environment.

**Rolling Pin**  
System: 40W XLi



# ORDERING INFORMATION

## LIGHTFORCE® XLi



PART NUMBER	PART DESIGNATION DESCRIPTION
SYS-000656-000-00	<b>LTS-4000-L-S8 (XLi) System - Int'l</b> LightForce XLi (40W) Therapy Laser System

### LIGHTFORCE® XLi STANDARD ACCESSORIES

KIT-000686-000-02	<b>XLi SHP w/ Attachment Kit Case and Treatment Heads</b> XLi Handpiece System Kit with 6 Treatment Heads (includes: 800um EmpowerIQ Delivery System, Attachment Kit Case, XL Rolling Pin, XL non-contact Cone, Large Contact Ball, Large Non-Contact Cone, Small Contact Ball, Flat Window)
PRD-000758-010-00-L	<b>800um SHP v2 Assy</b> Handpiece - 800um Empower IQ Delivery System
KIT-000685-000	<b>XLi BDA Attachment Kit Case with 4 Treatment Heads</b> Attachment Kit Case with 4 Treatment Heads (includes: Attachment Kit Case, Large Contact Ball, Large Non-Contact Cone, Small Contact Ball, Flat Window)
PRD-000229-010-00	<b>BDA Attachment head Large Ball Alum - Rolling</b> Treatment Head - Large contact Ball Attachment - Rolling
PRD-000230-010-L	<b>BDA Attachment Head Large Cone Alum</b> Treatment Head - Large non-contact Cone Attachment
PRD-000644-000	<b>BDA Attachment Head XL Cone</b> Treatment Head - XL Cone Attachment
PRD-000721-000	<b>BDA Attachment Head XL Roller</b> Treatment Head - XL Rolling Pin Attachment
PRD-000687-000	<b>XL Band, LightForce, Black</b> Black LightForce Band for XL Attachments
PRD-000683-000-01	<b>LTS Carry Bag - LightForce</b> Carry Bag for LightForce 25W / 40W

## LIGHTFORCE® XPi



PART NUMBER	PART DESIGNATION DESCRIPTION
SYS-000837-000-00	<b>LTS-2500-L-S8 (XPi) System - Int'l</b> LightForce XPi (25W) Therapy Laser System

### LIGHTFORCE® XPi STANDARD ACCESSORIES

KIT-000686-000-01	<b>XPi SHP w/ Attachment Kit Case and Treatment Heads</b> XPi Handpiece System Kit with 5 Treatment Heads (includes: 800um Empower IQ Delivery System, Attachment Kit Case, Large Contact Ball, Large Non-Contact Cone, Small Contact Ball, Small non-contact cone, Flat Window)
PRD-000758-010-00-L	<b>800um SHP v2 Assy</b> Handpiece - 800um Empower IQ Delivery System
KIT-000497-000-02	<b>BDA Attachment Kit Case with 4 Treatment Heads (Aluminum Rolling)</b> Attachment Kit Case with 4 Treatment Heads (includes: Attachment Kit Case, Large Contact Ball, Large Non-Contact Cone, Small Contact Ball, Small non-contact cone)
PRD-000229-010-00	<b>BDA Attachment head Large Ball Alum - Rolling</b> Treatment Head - Large contact Ball Attachment - Rolling
PRD-000230-010-L	<b>BDA Attachment Head Large Cone Alum</b> Treatment Head - Large non-contact Cone Attachment
PRD-000232-000-L	<b>BDA Attachment head Small Cone</b> Treatment Head - Small non-contact Cone Attachment
PRD-000683-000-01	<b>LTS Carry Bag - LightForce</b> Carry Bag for LightForce 25W / 40W



## LIGHTFORCE® FXi



PART NUMBER	PART DESIGNATION DESCRIPTION
SYS-000829-000-00	<b>LTC-1510-L-B6 (FXi w/ BHP) System - Int'l</b> Light Force FXi (15W) Therapy Laser System

### LIGHTFORCE® FXi STANDARD ACCESSORIES

PRD-000424-010-01	<b>600um BHP</b> Handpiece - 600um Empower Delivery System
KIT-000497-000-00-L	<b>BDA Attachment Kit Case with 4 Treatment Heads</b> Attachment Kit Case with 4 Treatment Heads (includes: Attachment Kit Case, Large Contact Ball, Large Non-Contact Cone, Small Contact Ball, Small non-contact cone)
PRD-000229-000-L	<b>BDA Attachment head Large Ball</b> Treatment Head - Large contact Ball Attachment
PRD-000230-000-L	<b>BDA Attachment Head Large Cone</b> Treatment Head - Large non-contact Cone Attachment
PRD-000232-000-L	<b>BDA Attachment head Small Cone</b> Treatment Head - Small non-contact Cone Attachment
ELX-000767-000-L	<b>XP Power 150W 12V AC_DC Power Supply</b>
PRT000297-L	<b>Battery</b>
PRD-000807-000-01	<b>LTC Carry Bag - LightForce</b> Carry Bag for LightForce 15W

### STANDARD ACCESSORIES (ALL PRODUCTS)

PART NUMBER	PART DESIGNATION DESCRIPTION
PRD-000231-000-L	<b>BDA Attachment head Small Ball</b> Treatment Head - Small Contact Ball Attachment
PRD-000233-000	<b>BDA Flat Window</b> Treatment Head - Flat Window Attachment
PRT000240-L	<b>Attachment Kit Case</b>
PRT000269	<b>LightForce Band, black</b> Black LightForce Band for Large Attachments
PLS-000367-000-L	<b>BDA, Accessory Dust Cap</b> Attachment Dust protection Cap
PRT000374-L	<b>Power Cord, "G" Style</b> Power Cord, UK, "G" Type
PRT000103-L	<b>Power Cord - EURO BLK 8FT (C Type)</b> Power Cord, EU, "C" Type
CBL-000320-000-L	<b>Power Cord, 2.9M BLK (I type China / Aus)</b> Power Cord, Asia / Australia, "I" Type
PRT000011-L	<b>Over Goggle</b> Over Glasses Safety Goggles (OD 5+)
PRT000326	<b>Regular Goggle, LightForce Green</b> Regular Safety Goggles, LightForce Green (OD 5+)
PRT000473	<b>P-Shield</b> P-Shield Safety Goggles

### OPTIONAL ACCESSORIES

PRD-000204-010-L	<b>LTC Hard Rolling Case</b> Hardside Rolling Case for 15W system
PRD-000215-010-L	<b>LTS Hard Rolling Case</b> Hardside Rolling Case for 25W / 40W system
PRD-000207-000-L	<b>Laser Cart and Bin</b> Cart / Bin

329.0

PERFECT Protocol

# chattanooga®

## DJO Asia Pacific

1905, Tower 2, Grand Central Plaza  
Shatin  
HONG KONG  
**T:** 852 31051415  
**E:** marketing.ap@djoglobal.com

## DJO Australia

*ANZ Asia*  
PO Box 6057  
Frenchs Forest DC  
NSW 2086  
AUSTRALIA  
**T:** 1300 66 77 30  
**E:** customerservice.au@djoglobal.com

## DJO Benelux

Kleinhoefstraat 5, bus 39  
Geel 2440  
BELGIUM  
**T:** +32 (0)14 248090  
**E:** benelux.orders@djoglobal.com

## DJO Canada

6485 Kennedy Rd  
Mississauga  
Ontario, L5T2W4  
CANADA  
**T:** 1-866-866-5031  
**E:** canada.orders@djoglobal.com

## DJO China

A312 SOHO ZhongShan Plaza  
1055 W. ZhongShan Rd  
Shanghai, 200051  
CHINA  
**T:** (8621) 6031 9989  
**E:** information\_china@djoglobal.com

## DJO France

3 rue de Bethar  
Centre Européen de Frêt  
64990 Mouguerre  
FRANCE  
**T:** +33 (0)5 59 52 86 90  
**E:** sce.cial@djoglobal.com

## DJO Germany

Bötzingen Straße 90  
79111 Freiburg  
GERMANY  
**T:** +49 (0) 180 1 676 333  
**E:** kundenservice@djoglobal.de

## DJO Italy

Via Leonardo da Vinci 97  
Trezzano sul Naviglio  
Milan 20090  
ITALY  
**T:** +39 02 835 98001  
**E:** vendite@djoglobal.com

## DJO Nordic

Murmansgatan 126  
212 25 Malmö  
SWEDEN  
**T:** +46 40 39 40 00  
**E:** info.nordic@djoglobal.com

## DJO South Africa

Unit 6, 2 on London, 2 London Circle  
BrackenGate Business Park  
Brackenfell, 7560  
SOUTH AFRICA  
**T:** +27 (0) 21 276 2968  
**E:** info.southafrica@djoglobal.com

## DJO Spain

Av.Cornella 144. 1-4  
08950 Esplugues de Llobregat  
Barcelona  
SPAIN  
**T:** +34 93 480 32 02  
**E:** ventas@djoglobal.com

## DJO UK & Ireland

1a Guildford Business Park  
Guildford, Surrey  
GU2 8XG  
UK  
**T:** +44 (0)1483 459 659  
**E:** ukorders@djoglobal.com

## DJO USA

2900 Lake Vista Drive  
Lewisville  
TX 75067  
U.S.A.  
**T:** 760 727 1280  
**E:** customercare@djoglobal.com



**DJO Global**  
1a Guildford Business Park  
Guildford, Surrey  
GU2 8XG  
UNITED KINGDOM

[chattanoogarehab.com](http://chattanoogarehab.com)

© 2021 DJO - MKT-000-00011277-EN - REVA  
Individual results may vary. Neither DJO Global, Inc. nor any of its subsidiaries dispense medical advice. The contents of this brochure do not constitute medical, legal, or any other type of professional advice. Rather, please consult your healthcare professional for information on the courses of treatment, if any, which may be appropriate for you.